



Date: March 25, 2020

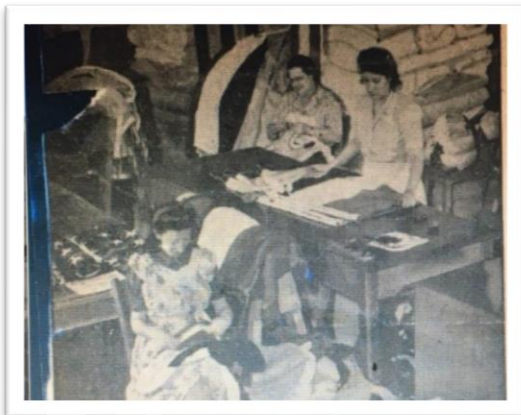
To: OPEIU Local 29 Members

From: OPEIU Local 29 Leadership

We hope you're staying safe and healthy during this stressful time. Many of our members work in healthcare, homeless services, credit unions, insurance companies, trade unions and other essential services that are continuing to operate despite the shelter-in-place orders in California. We appreciate all you're doing to keep our families and communities safe, and we're committed to doing all we can to safeguard the health and safety of our members during this difficult time. Together, we'll get through this.



We are advocating for both employers and local, state, and federal governments to provide paid leave for those who are being sent home, laid off, or need to be home with their families due to the COVID-19 crisis. For those who continue to work, Cal/OSHA guidelines require your employer to provide you with the protective equipment you need to perform your job. We're in communication with employers to assure they're keeping you safe and negotiate over temporary or just in time policies to protect workers' rights. The labor community has united and we all are working together to ensure the federal government takes care of workers and their families first and not big business.



This is Women's History month; we are all called upon during WWII and now we are being called upon to all do our part to get through the COVID-19 crisis. As a union, we've gotten through many difficult times by supporting and fighting for each other, and the COVID-19 pandemic is going to take all of us working together. We'll emerge from this stronger continuing to fight for workers. Please visit our website at www.OPEIU29.org to keep up to date and find resources to help you get through these changing times. To all members on the front line and working day to day to service other THANK YOU for everything you do!

During this time our offices are available for phone calls and emails, we have closed our offices to any walk-ins to comply with the "Shelter-in-Place" order and safety of our staff to do our part to stop the spread.

If you have any questions, please reach out to your shop steward, your Business Representative, or our main office at Oakland office at 510-746-5960 or San Francisco office at 415-647-7776. If we do not have your email address or cell phone to keep in touch of updates from our office please email your information to president@opeiu29.org.

KG/lm(covidleadinfo032020)/cwa:9415/afl-cio